

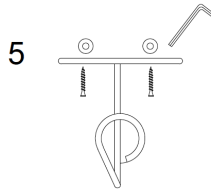
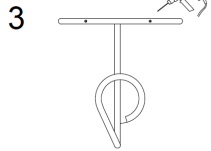
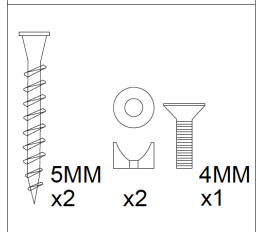
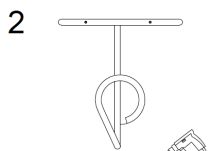
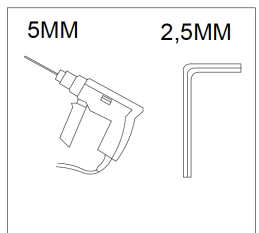
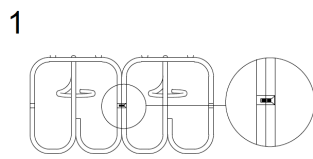
Assembly instructions

- 1- Present, level and mark the 2 holes.
- 2- Drilling
- 3- Place tacos
- 4- Position the two rear supports and screw the two 5 mm screws.

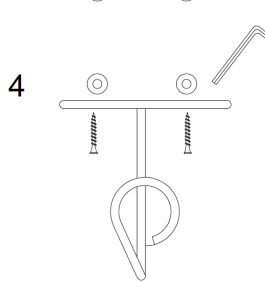
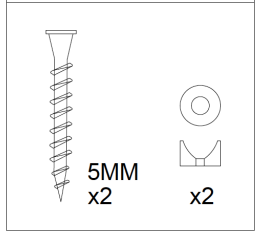
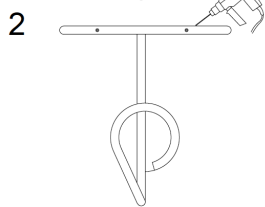
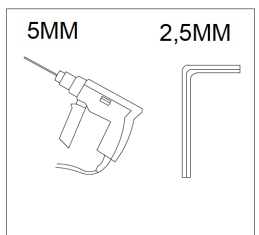
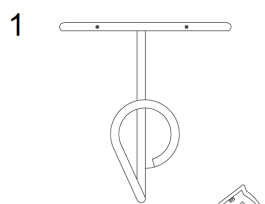
JOIN ANOTHER HANGER

The hanger has two lateral holes, one through and one threaded.

- 1- Insert the 4 mm screw into the through-hole and tap it. Present, level and mark the 2 - Holes.
- 2- Drilling
- 3- Place tacos
- 4- Position the two rear supports and screw the two 5 mm screws.



Colgador GERMAINE
Diseño: Lluís Clotet &
Oscar Tusquets



Colgador GERMAINE
Diseño: Lluís Clotet &
Oscar Tusquets



General

Assembly instructions

Read these warnings carefully.

The coat rack is designed to be fixed to the wall.

Due to the different types of materials existing today in the construction, we supply the standard wall anchoring screws, not including dowels. Check with the manufacturer of the material for advice. Sometimes the client has had to change it.

The non-use of the products for the purposes that are designed, exempts us from any responsibility.

